

## Statistics about Down syndrome

Approximately 60 babies are born with DS in Vic each year,  
 About 4500 people with DS, of all ages, live in Vic in 2007.  
 On average Down syndrome is diagnosed in  
 1:350 pregnancies but only in 1:1150 live births.

*Most babies are born to mothers under 35 who have not had diagnostic testing.*

It is extremely difficult to get exact statistics regarding the numbers of people with Trisomy 21 within Australia as most government stats lump all disabilities together (including physical).

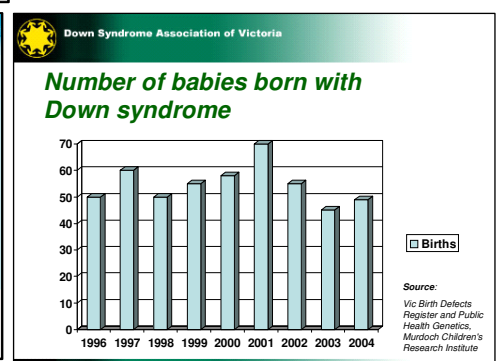
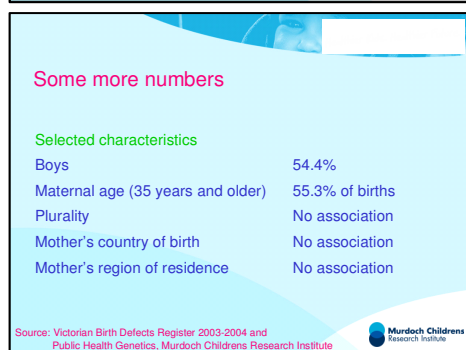
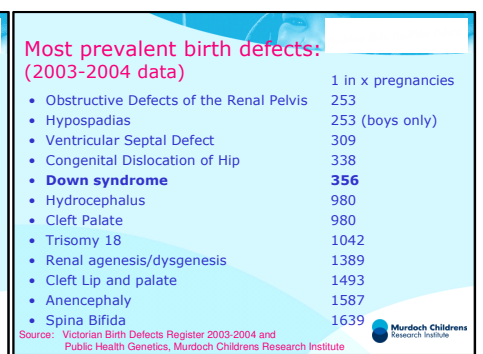
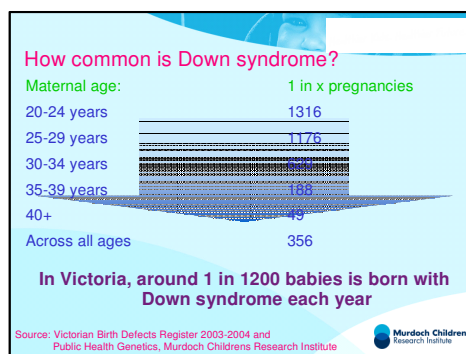
There are three forms of Down syndrome – Trisomy 21 or T21, Translocation & Mosaic. The latter two forms are less common.

Although the chance of having a child with DS is higher with the maternal age, most babies are born to mothers under 35 who have not had diagnostic testing. If any abnormality is suspected during the triple screen mothers can choose to have a diagnostic test (CVS or Amniocentesis). Currently over 95% of foetuses that are diagnosed with Down syndrome are terminated prior to birth. This accounts for many older prospective mothers who have undergone testing.

Life expectancy is increasing with improved medical care and is now 60+.

The following diagrams show recent Murdoch Children's Research Institute Statistics. More information is available from the 'Victorian Birth Defects Register' which are available on-line

<http://www.mcric.edu.au/>



information provided by  
 Down Syndrome Victoria  
 219 Napier Street  
 Fitzroy Victoria 3065  
 T: 1300 658 873  
 F: (03) 9486 9601  
 E: [info@dsav.asn.au](mailto:info@dsav.asn.au)

[www.downsyndromevictoria.org.au](http://www.downsyndromevictoria.org.au)